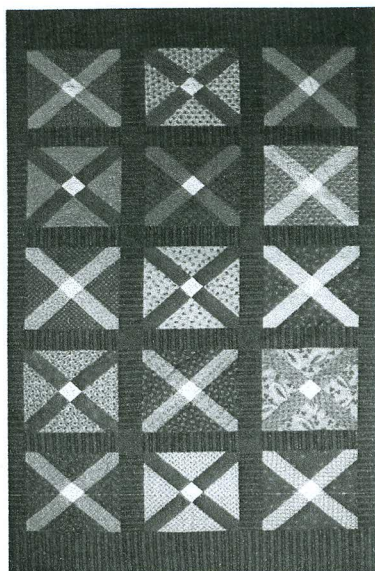


# Home of the Brave Quilt Project

## Album Block Pattern

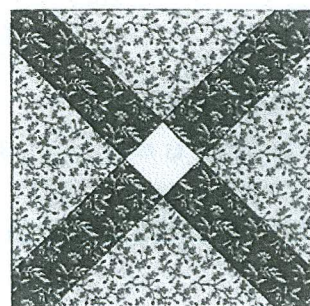
(Modified: April 2012)



48 X 84 Cot Quilt

### Fabric:

Civil War Reproduction fabric is requested  
You will need 2 contrasting/coordinating fabrics  
1 - 2 5/8" square of fabric for signature block,  
(this should be tone on tone or something with  
not much design, so writing will show)



12 1/2" Block

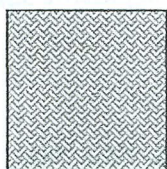
### For one block you will need:

- 1 - 11" square of fabric #1 → spray starch
- 1 - 2 5/8" x 18" rectangle strip - fabric 2
- 2 - 2 5/8" x 9" rectangle strips - fabric 2
- 1 - 2 5/8" square for center block - fabric 3

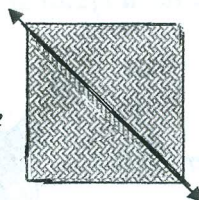
### Cutting Directions:

#### Fabric #1

Cut 1 - 11" square



Sub-cut the square  
on the diagonal twice



after cutting, you  
will have 2 bias  
Cut triangles

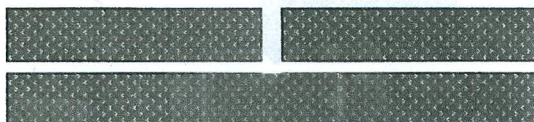
#### Fabric #2

Cut 2 - 2 5/8" X 9"

Rectangles

Cut 1 - 2 5/8" x 18"

Rectangle



#### Fabric #3

Cut 1 2 5/8" square  
for Signature Block



Sew the 18" rectangle strip (fabric #2) between the two bias  
cut triangles as follows:

Beginning about 1" in from the end of the strip, stitch the  
strip to the diagonal edge of one triangle. Press seam  
allowance toward the triangle.

Align straight sides of the triangle with strip (from above),  
fold in half and finger press the strip to mark the center. In  
the same way, fold the remaining triangle and finger press.  
Match these two marks and sew together.



Press seam towards triangle. the strip will extend  
beyond the edge of the triangles. Do Not Trim!